

High Speed Steel Rolls

Hitachi Roll Material

Adamite Steel
Cr Iron
Cr Steel
Definite Chilled Iron
High Speed Steel
Indefinite Chilled Iron
Nodular Iron
Special Cast Steel



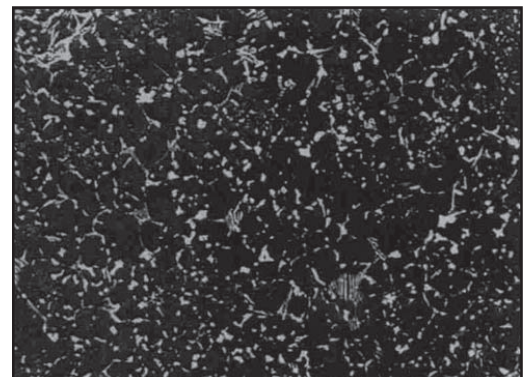
High Speed Steel (HSS) rolls are composed of high alloy and high carbon HSS outer shell with either a forged steel or nodular iron core. This type of molten metal for HSS is poured along the core material continuously or spun cast. HSS provides excellent hardness, wear resistance, and high temperature properties. The advantages of these high-speed rolls are:

1. The high-carbon, high-alloy outer shell has high hardness at high temperatures, providing excellent wear resistance.
2. The outer shell has a fine microstructure without gravity segregation due to its special casting method.
3. The boundary between the outer shell and core is combined by metallic diffusion.

Applications for these rolls include hot strip mill finishing train, rod and bar mill finishing, and universal mill finishing. Because of the excellent properties of these rolls, new applications are continuously being investigated and tried.

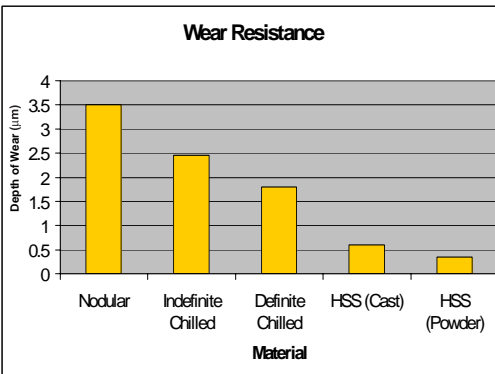
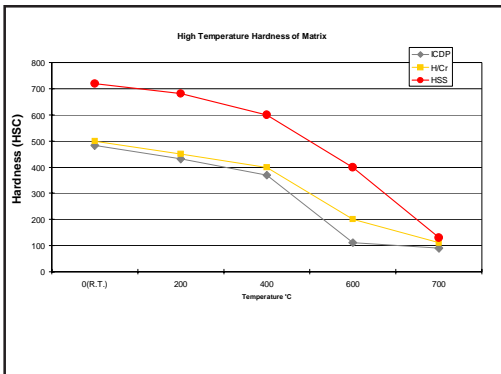
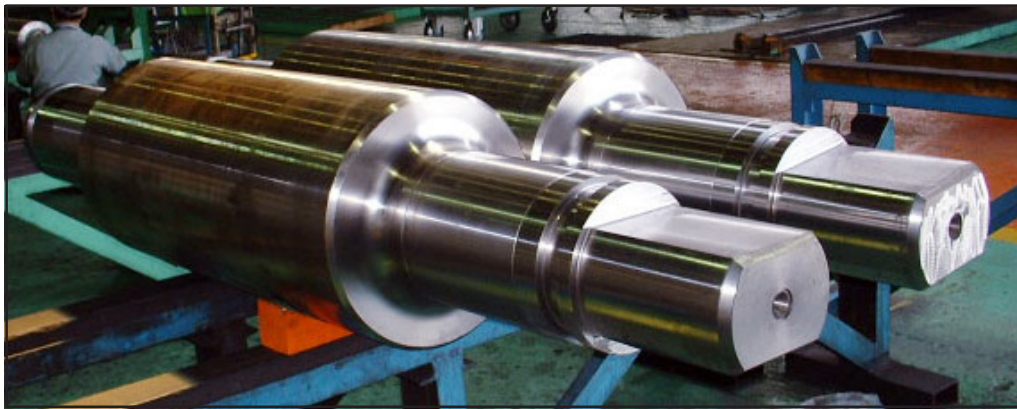


Casting HSS Rolls



HSS Metal Structure

| High Speed Steel Roll | WZ20 (Spin Cast) | RZ30 (Clad Cast) | HP10 (Powder) |
|-----------------------|---------------------|---------------------|------------------|
| Hardness (HSC) | 75-85 | | |
| Composition (% wt) | | | |
| Carbon (C) | 1.5 - 3.5 | | |
| Silica (Si) | 0.3 - 3.0 | | |
| Maganese (Mn) | 0.3 - 1.5 | | |
| Nickel (Ni) | <5 | | |
| Chromium (Cr) | 2.0 - 7.0 | | |
| Molybdenum (Mo) | <9 | | |
| Tungsten (W) | <20 | | |
| Vanadium (V) | 3.0 - 15.0 | | |
| Cobalt (Co) | <10 | | |



Since 1915, Hitachi Metals, Ltd. has been a leading roll manufacturer. Through constant study and research, Hitachi has kept abreast of the demands and advances of the industry. Today, Hitachi is a full-line roll manufacturer, second to none in the world. With its innovative roll manufacturing techniques, Hitachi supplies all types of mill rolls to industries in all parts of the world, meeting the special demands of each industry.

This information does not constitute a warranty or guarantee.

Hitachi Metals America, Ltd.
Materials Trading Division
222 North Park Drive, Suite 2
West Hills Industrial Park
Kittanning, PA 16201-8883
Toll Free: 1.877.787.3120
Phone: 724.545.3161
Fax: 724.545.3164
www.hitachimetals.com

