

# 3.2mm SQUARE ISOLATOR

## MODEL ESI-3EAR 2.560 G 01 - T

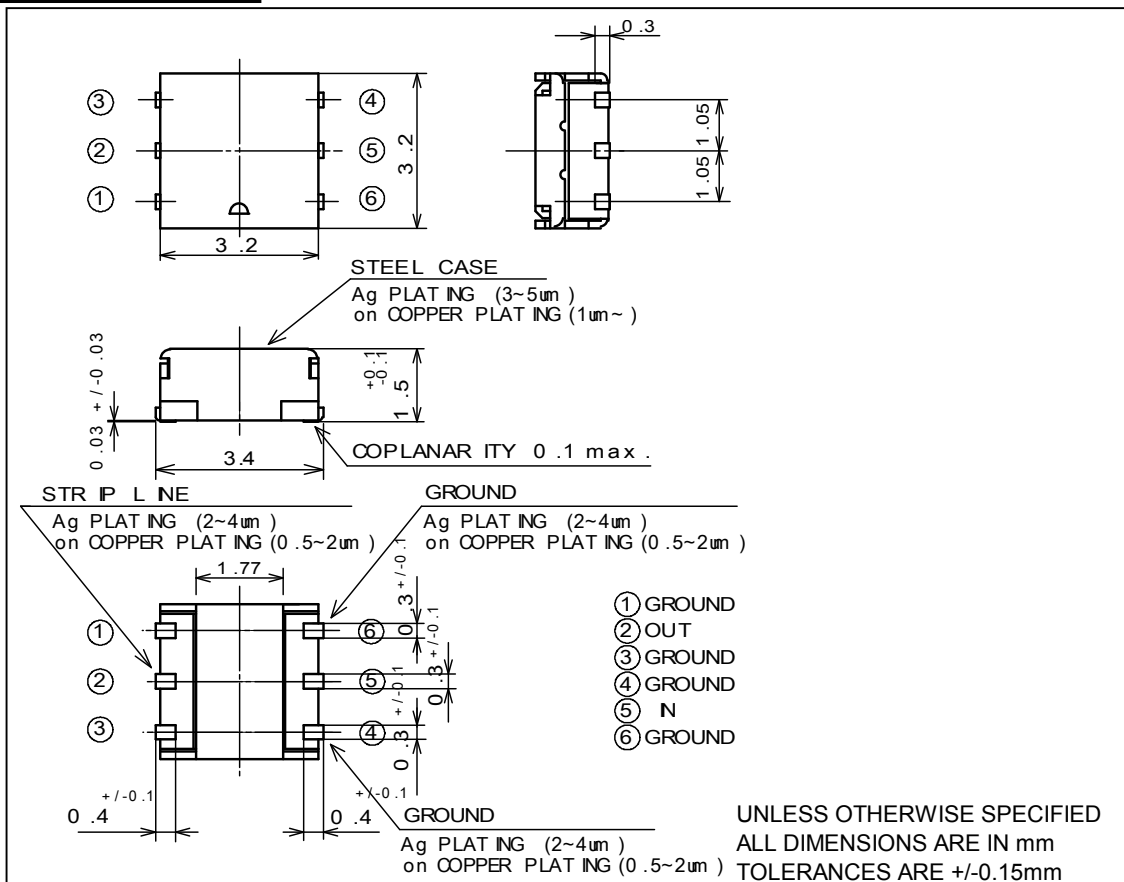
- (1) Series ESI-3EAR : 1.6mm Height  
 (2) Center Frequency  
 (3) G : GHz  
 (4) Control No.  
 (5) T : Taping  
 Blank : Bulk

### Target Specification

Frequency (GHz)	Ins. Loss Max. (dB)	Isolation Min. (dB)	V.S.W.R. (IN) Max.	V.S.W.R. (OUT) Max.	Handling Power Max. (W)	Reflection Power Max. (W)
2.545-2.575	0.65	15	1.50	1.50	2.5	0.6

Operating Temperature(deg.C) ; -35 to +85  
 Impedance ; 50 ohms Typ.

### Shape & Size



TBE504-1

Hitachi Metals, Ltd. Tottori Works

CONFIDENTIAL

The contents of this document is the property of Hitachi Metals Ltd. and may not be communicated to any other party in any form without the prior written contents of Hitachi Metals Ltd.

Materials Mag!c

<http://www.hitachi-metals.co.jp/e/>