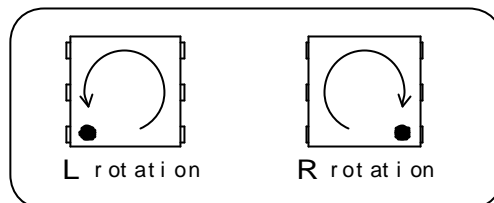


# 5mm SQUARE THIN TYPE CIRCULATOR

**MODEL** ESC-5 [ ] 0881 M 01 - T

- (1) Series ESC-5 ; 2.0mm Height  
 (2) Rotating Direction (R or L)  
 (3) Center Frequency  
 (4) M ; MHz  
 (5) Control No.  
 (6) T ; Taping  
 Blank ; Bulk

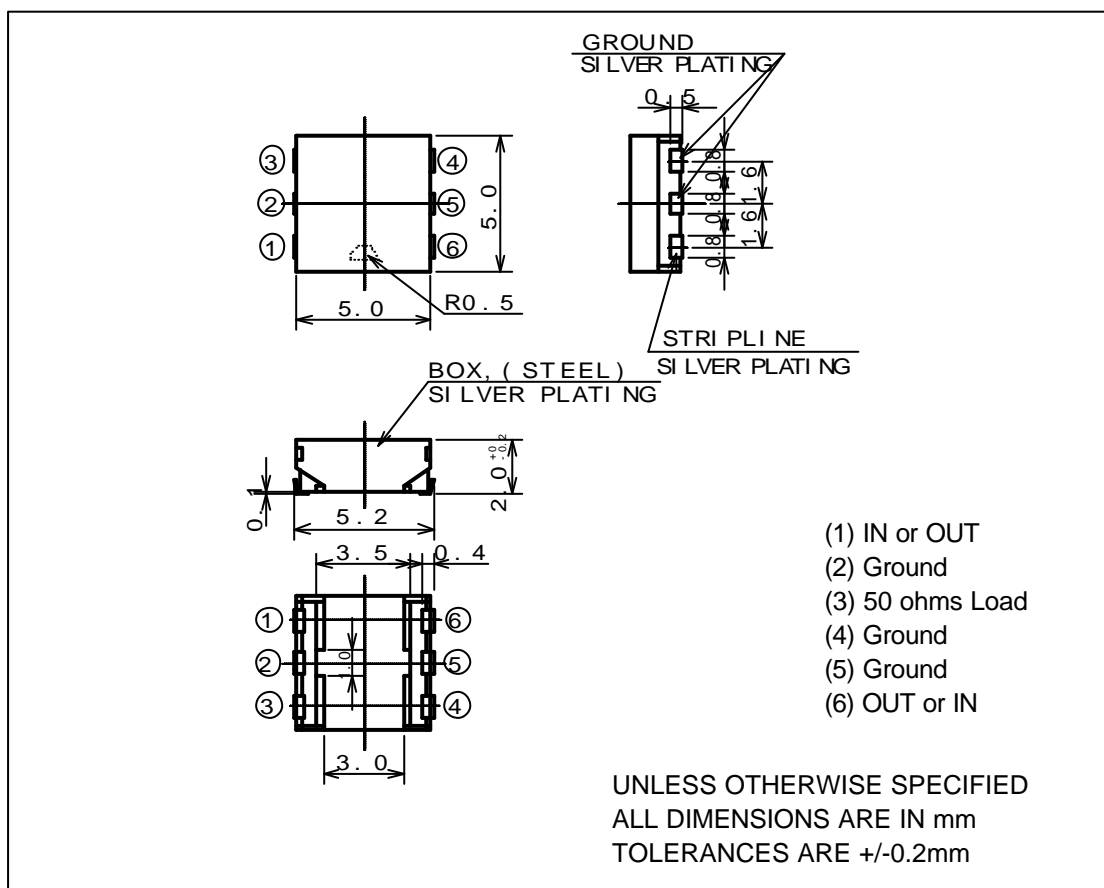


## Specification

Frequency (MHz)	Ins. Loss Max. (dB)	Isolation Min. (dB)	V.S.W.R.(IN) Max.	Handling Power Max. (W)
869-894	0.9 (Port (6)-(1))	12 (Port (1)-(6))	1.7 (Port (1),(6))	5.0

Operating Temperature(deg.C) ; -35 to +85  
 Impedance ; 50 ohms Typ.

## Shape & Size



TBE370